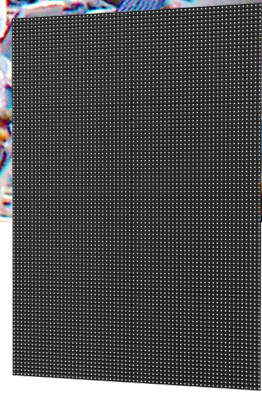






* All images in this datasheet are for illustrative purposes only.





Outdoor LED GNEB

Outdoor LED Display for Cruise Ships

 Durability for Rough Environment

 Flexible Configuration and Installation

 Easy Maintenance

 High Refresh Rate

GNEB

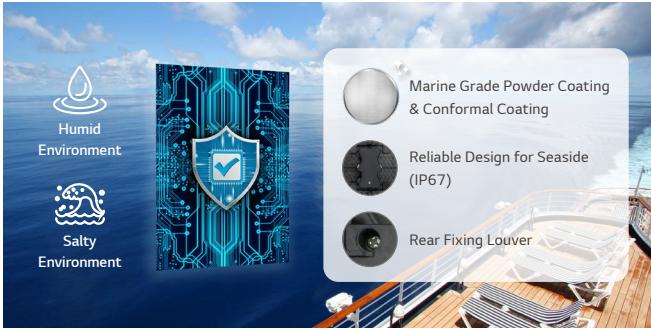
Pixel Pitch 6.25 / 8.33 mm

Brightness 6,000 nit

Weight per Cabinet depends

Service Access Front / Rear

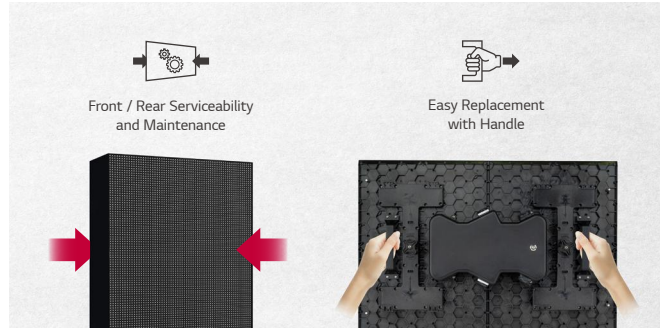
IP Rating IP67



Durability for Rough Environment

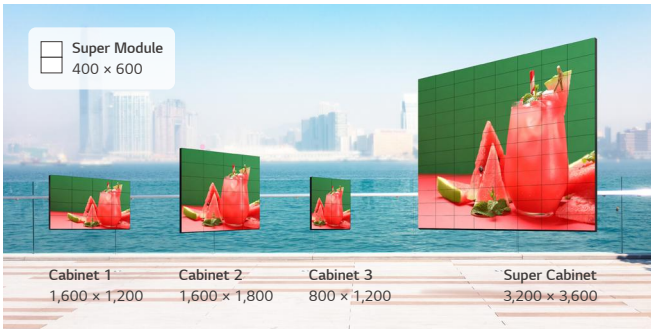
GNEB series provides durability with marine-grade powder coating and conformal coating to protect against salinity and corrosion in marine environments and weather conditions. Both the front and rear of the cabinet are IP67-certified and feature reliable designs for seaside, allowing for stable power and data connections protected by outdoor environmental factors such as wet weather and the salinity. The unexposed front screws further lower the risk of corrosion.

* Metal parts meet Qualicoat standards.



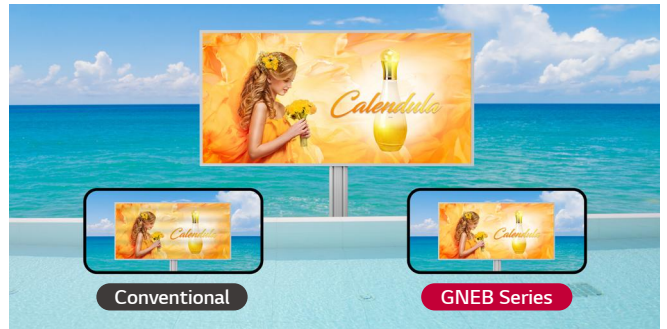
Easy Maintenance

The product offers both front and rear access, and features a power distribution unit (PDU) of a modular cabinet that can be easily attached or detached, thereby allowing for easy maintenance. A self-contained PSU and receiver card with handles allow quick and easy replacement.



Flexible Configuration and Installation

A variety of cabinet sizes are supported for flexible screen configuration and installation. Sizes of up to a 3,200 x 3,600 mm super cabinet are available for more convenient installation.



High Refresh Rate

A high refresh rate of 7,680 Hz assures the smooth playback of content. The flicker-free image prevents the black bars that typically occur during video playback, and reduces eye strain and blurred images for viewers.



Compatibility with LG Software Solutions

When connected with LG's CVEA system controller, the GNEB series is compatible with LG software solutions including SuperSign CMS, LED Assistant, and ConnectedCare, which help customers operate their own business properly.

* The availability of the 'LG ConnectedCare' service differs by region, and it needs to be purchased separately. So please contact the LG sales representative in your region for more details.

* The items that can be monitored by LG ConnectedCare : Main Board (Temp, Signal Status, FPGA Ver, Ethernet Connection Status), Receiving Card (Temp, LED Power)

* Actual GUI may vary in different webOS versions.

* SuperSign CMS service needs to be purchased separately.

SPECIFICATIONS

		GNEB062-GN	GNEB083-GN
Pitch Name		P6.25	P8.33
Physical Parameters	Pixel Configuration	Single SMD	Single SMD
	Pixel Pitch (mm)	6.25	8.33
	Module Resolution (W × H)	64 × 96	48 × 72
	Module Dimensions (W × H, mm)	400 × 600	400 × 600
	Weight per Module (kg)	8.33	8.33
	No. of Modules per Cabinet (W × H)	depends	depends
	Cabinet Resolution (W × H)	depends	depends
	Cabinet Dimensions (W × H × D, mm)	depends	depends
	Cabinet Surface Area (m ²)	depends	depends
	Weight per Cabinet (kg/Cabinet)	depends	depends
	Weight per Square Meter (kg/m ²)	34.7	34.7
	Physical Pixel Density (pixels/m ²)	25,600	14,400
	Flatness of Cabinet (mm)	±1.0	±1.0
	Cabinet Material	Al	Al
	Service Access	Front or Rear (Select One Only)	Front or Rear (Select One Only)
Optical Specifications	Max. Brightness (After Calibration, nit)	6,000	6,000
	Color Temperature (K)	3,500-8,500	3,500-8,500
	Visual Viewing Angle (H × V)	140 × 130	140 × 130
	Brightness Uniformity	97%	97%
	Color Uniformity	±0.05 Cx, Cy	±0.05 Cx, Cy
	Contrast Ratio	5,000 : 1	7,000 : 1
	Processing Depth (bit)	16 (HDR10, HDR10 Pro)	16 (HDR10, HDR10 Pro)
Electrical Specifications	Power Consumption (W/Cabinet, Max.)	167	167
	Power Consumption (W/Cabinet, Avg.)	67	67
	Power Consumption (W/m ² , Max.)	696	696
	Heat Dissipation (BTU/Cabinet, Max.)	569	569
	Heat Dissipation (BTU/Cabinet, Avg.)	228	228
	Heat Dissipation (BTU/m ² , Max.)	2,367	2,367
	Power Supply (V)	100 to 240	100 to 240
	Frame Rate (Hz)	50 / 60	50 / 60
	Refresh Rate (Hz)	7,680	7,680
Operation Specifications	LED Lifetime (Half Brightness)	100,000	100,000
	Operating Temperature (°C)	-30 to +50	-30 to +50
	Operating Humidity	0-90% RH	0-90% RH
	IP Rating Front / Rear	IP67 / IP67	IP67 / IP67
Certification		CE / FCC / ETL	CE / FCC / ETL
Environment		RoHS, REACH	RoHS, REACH
Controller		CVEA	CVEA
90 Degree Corner Cut		Yes	Yes

* Specifications are subject to change without notice. Please make sure to check the product manual for details about product usage.



Download
LG C-Display+
Mobile App
Google Play Store

www.lg.com/global/business/information-display
www.youtube.com/c/LGCommercialDisplay
www.facebook.com/LGInformationDisplay
www.linkedin.com/company/LGinformationdisplay
twitter.com/LG_ID_HQ

LG may make changes to specifications and product descriptions without notice. Copyright © 2022 LG Electronics Inc. All rights reserved. "LG Life's Good" is a registered trademark of LG Corp. The names of products and brands mentioned here may be the trademarks of their respective owners.